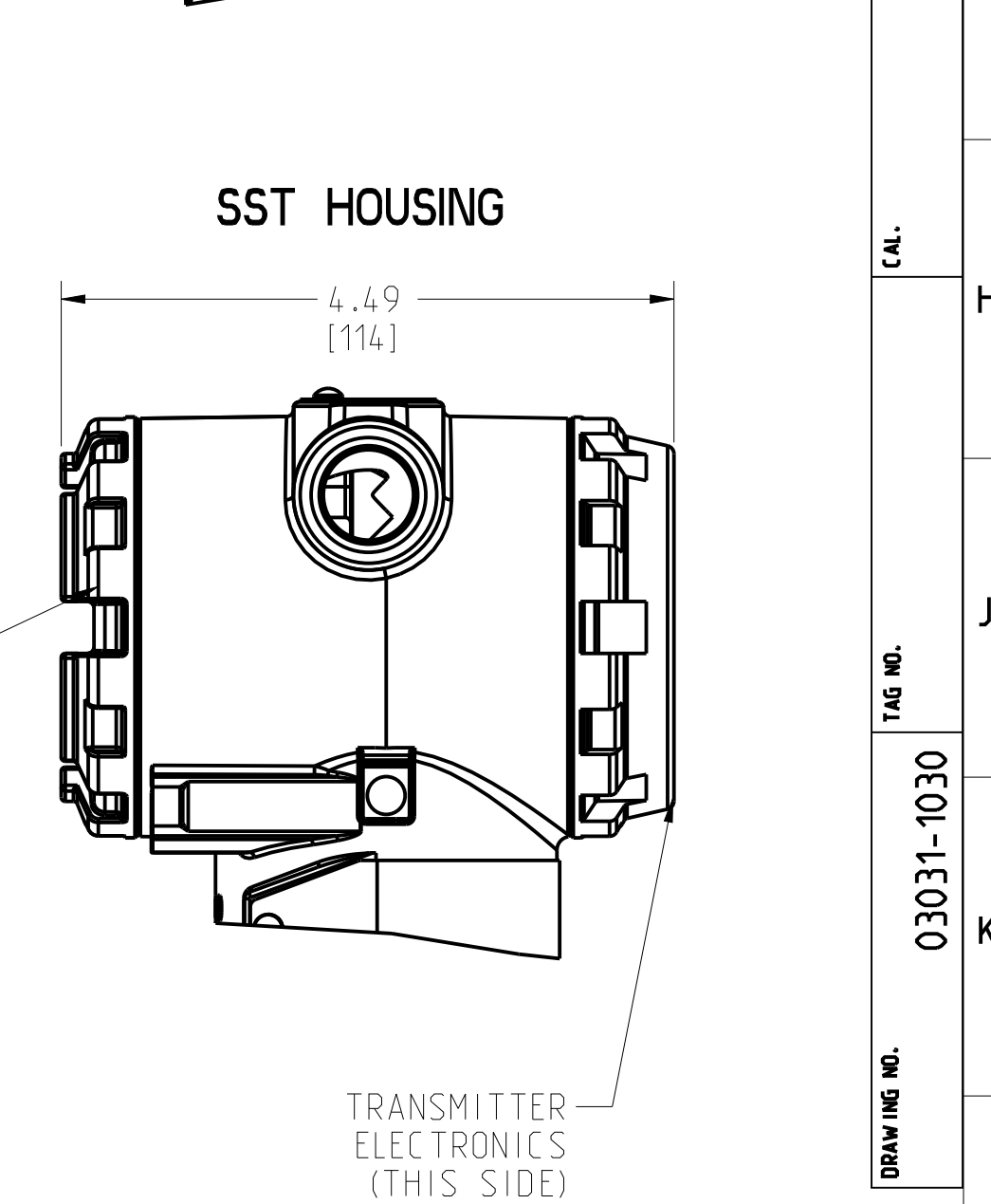
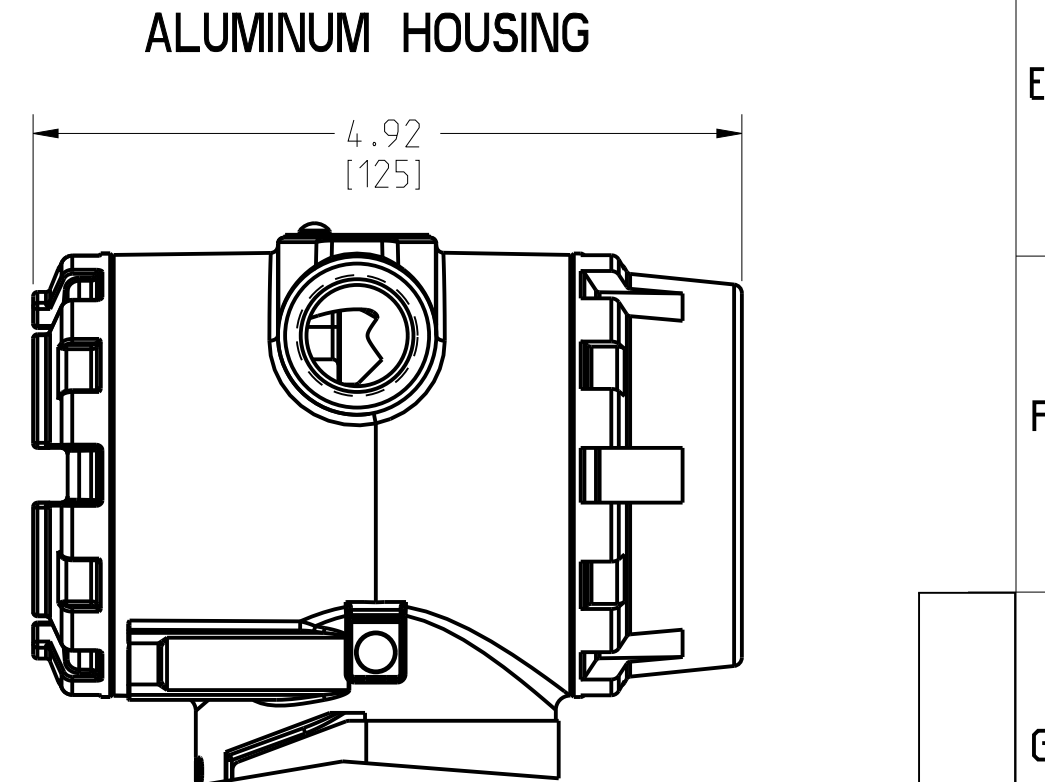
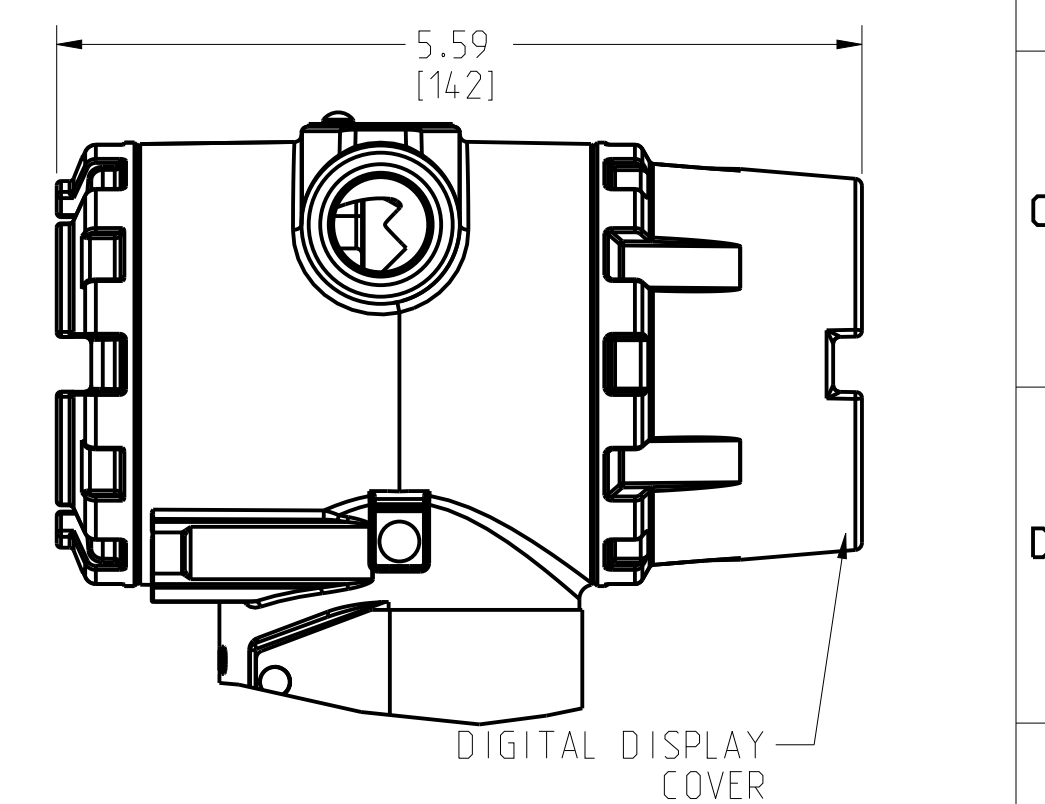


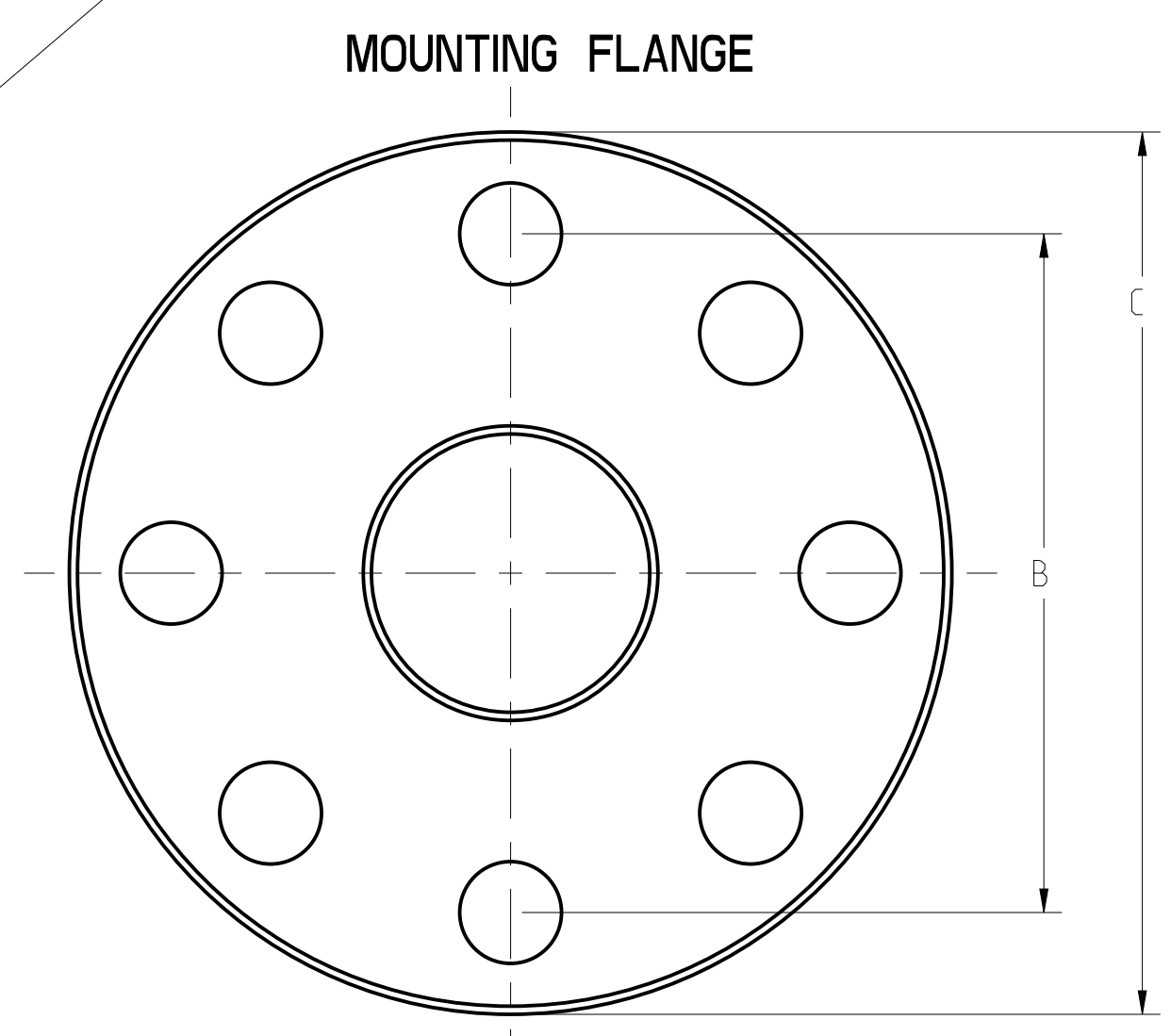
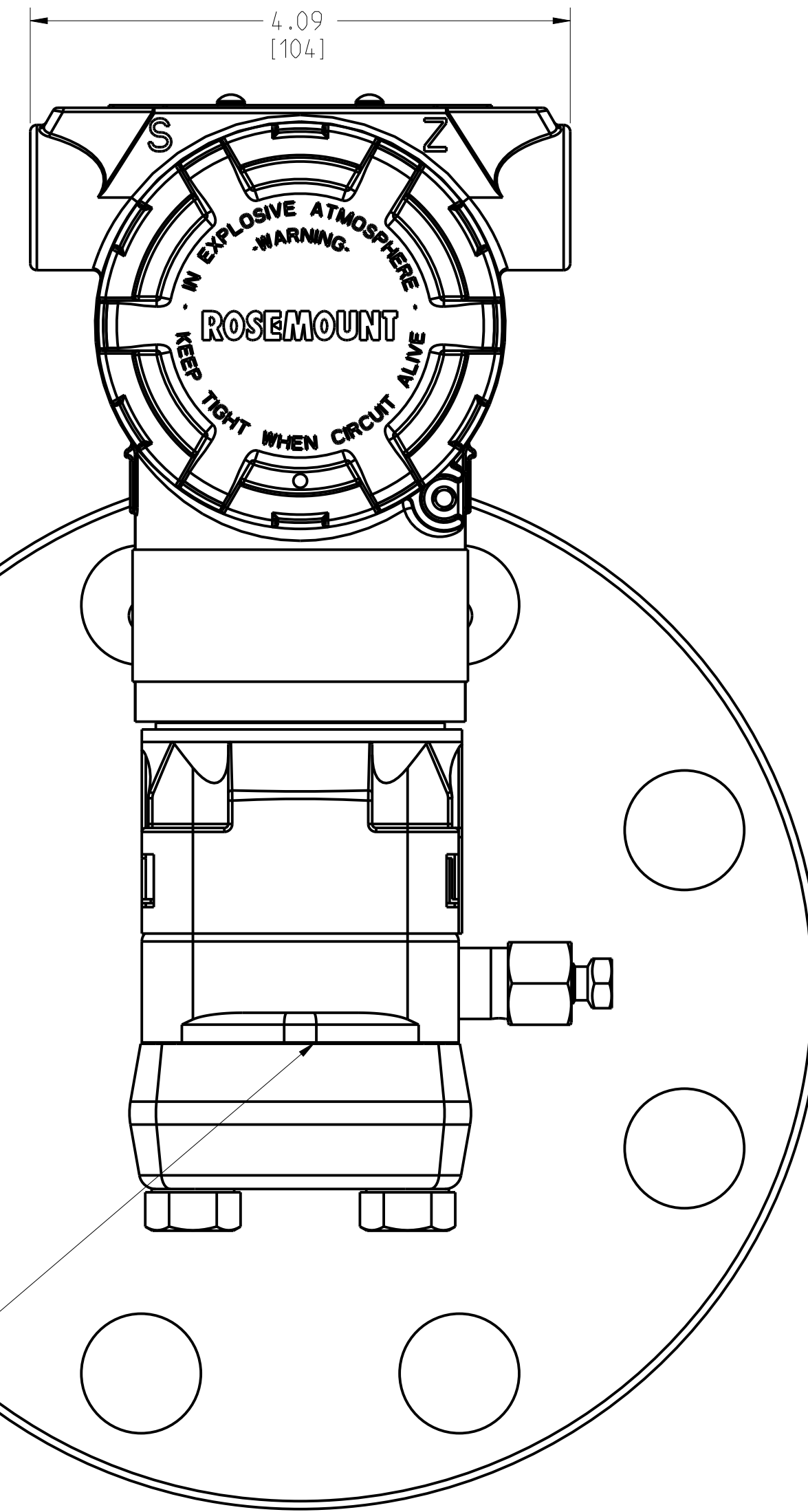
# ROSEMOUNT 3051L LIQUID LEVEL PRESSURE TRANSMITTER COPLANAR FLANGE PROCESS CONNECTION

REVISION TABLE			
REVISION	ECO NO.	APP'D	DATE
AC	RTC1056240	FL	2/25/13
DESCRIPTION			
UPDATE TO PRO-E			

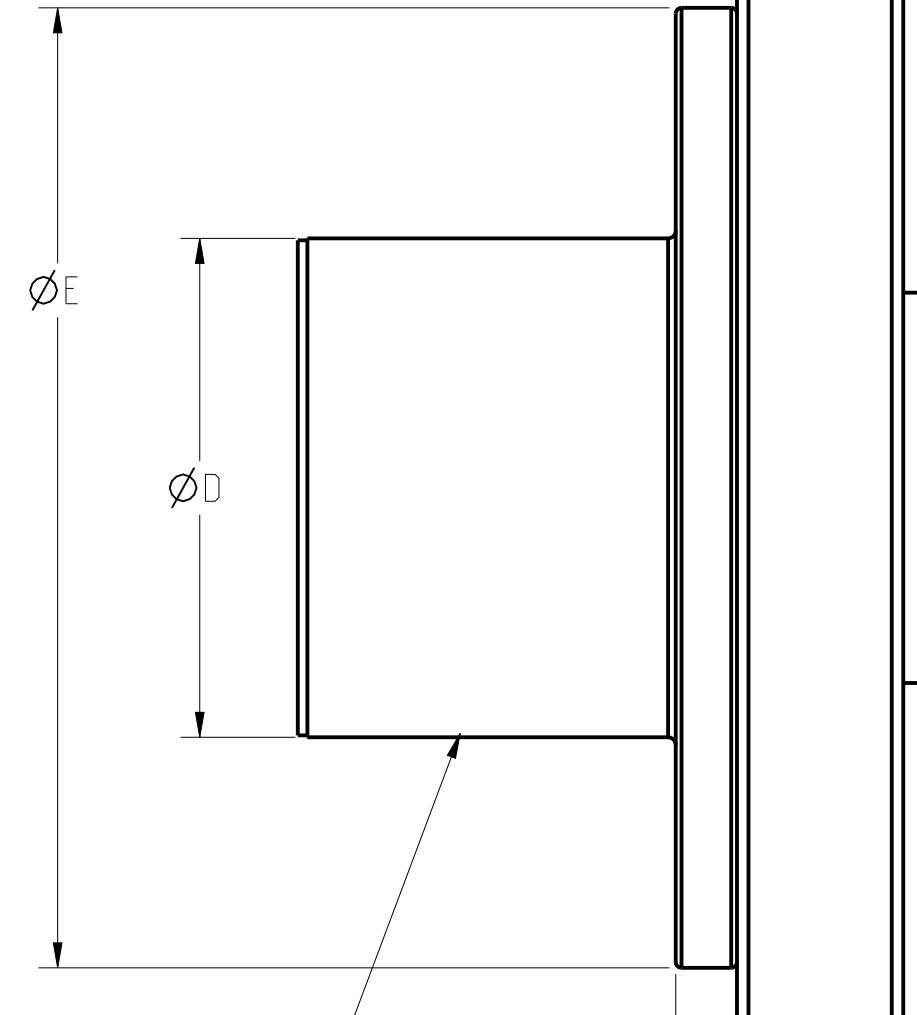
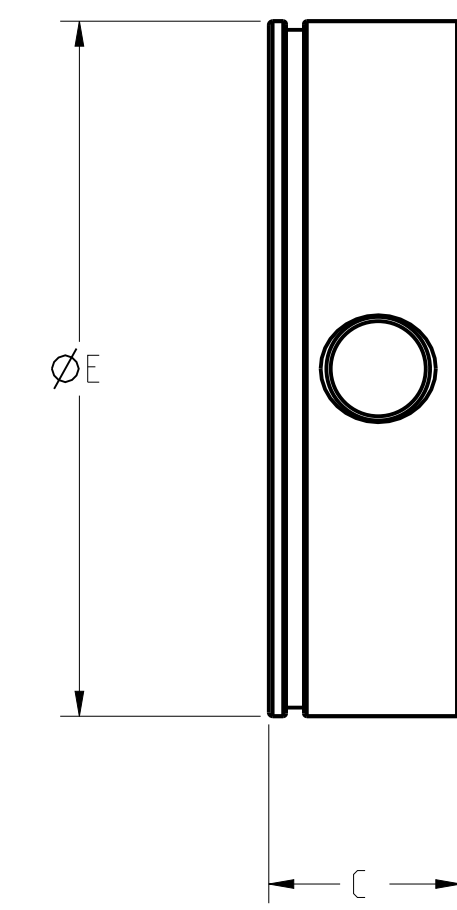
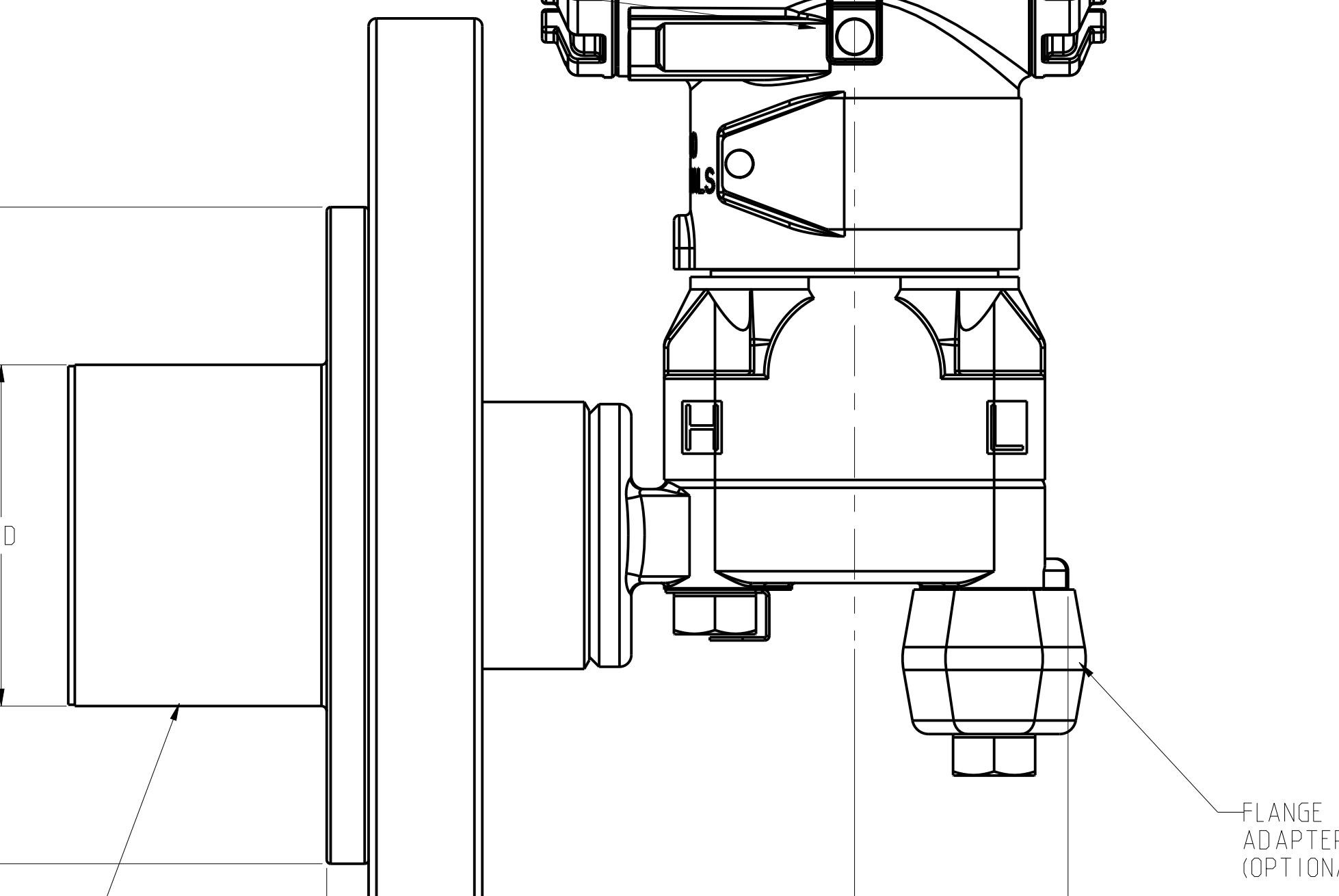
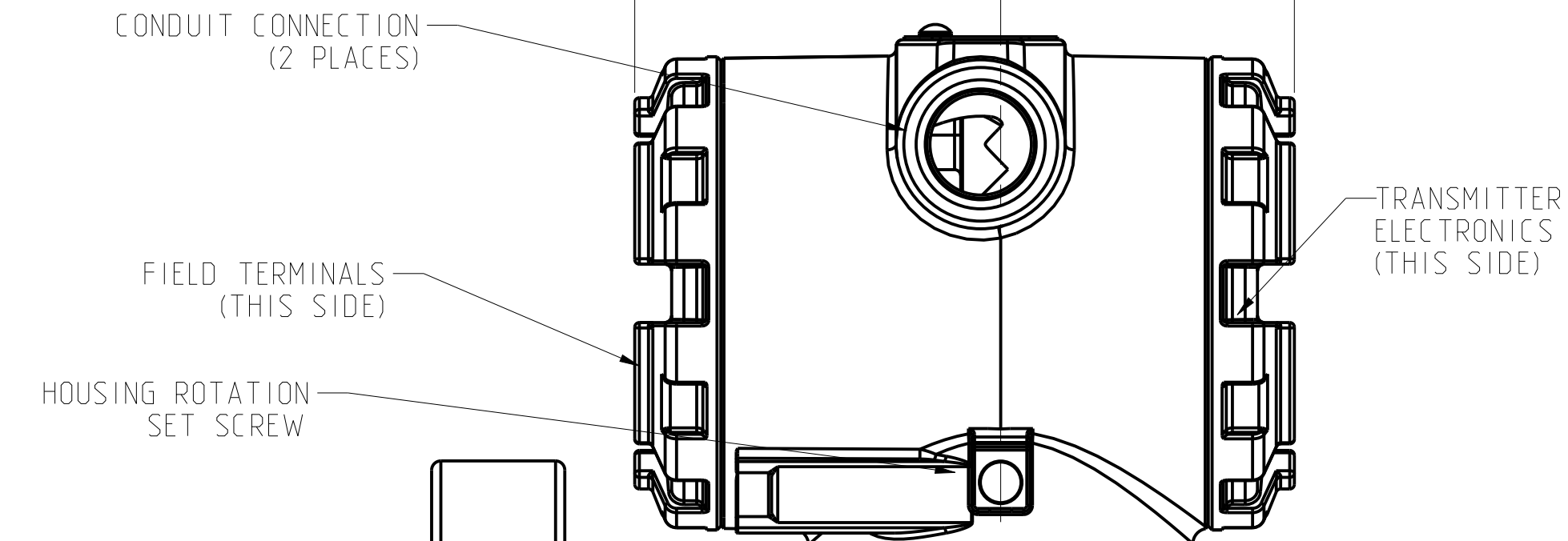
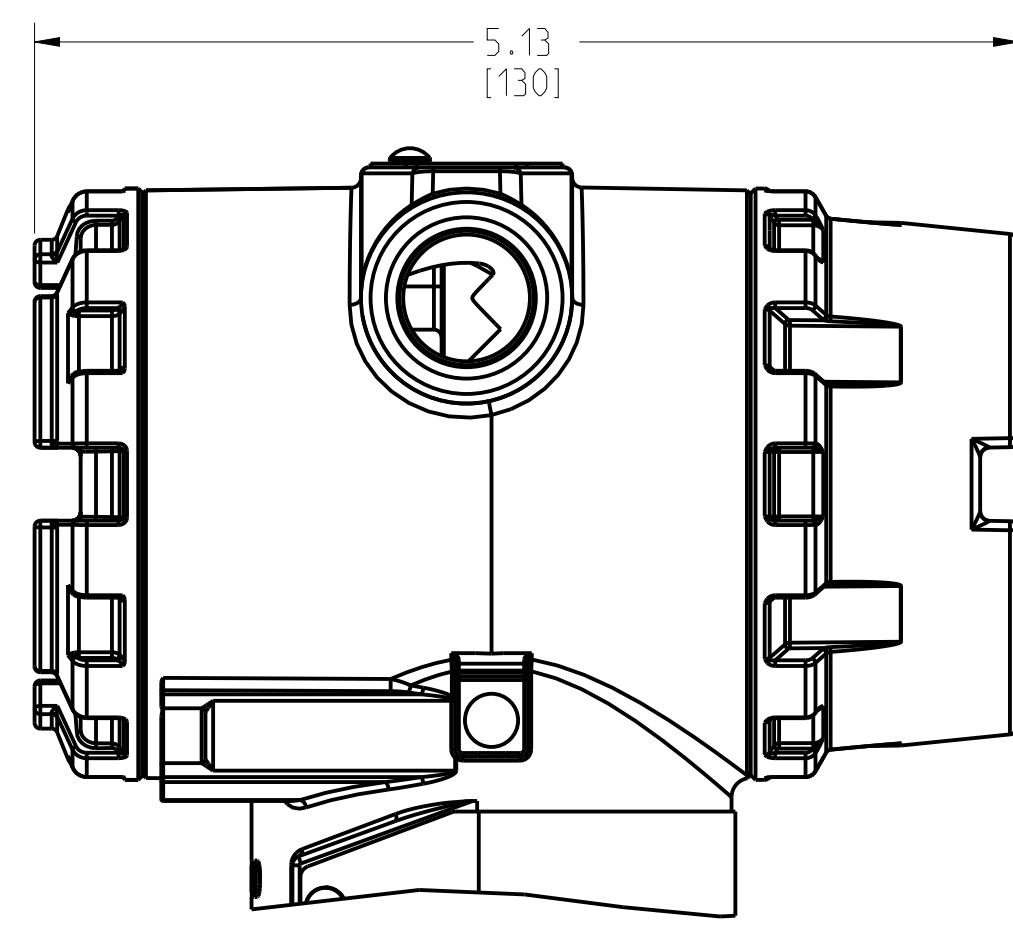
OUTPUT CODE (F) AND (W)  
ALUMINUM/SST HOUSING  
SHOWN WITH OPTIONAL DIGITAL DISPLAY



OUTPUT CODE (A) AND (M)  
ALUMINUM/SST HOUSING



SHOWN WITH OPTIONAL DIGITAL DISPLAY



2.4, or 6" EXTENSION  
(ONLY AVAILABLE WITH 3 AND 4", DN80, DN100 FLANGE CONFIGURATIONS)

SEE TABLES ON PAGE 3 FOR DIMENSIONS

1/4-18 NPT PROCESS CONNECTION OR  
1/2-18 NPT PROCESS CONNECTION w/ OPTIONAL FLANGE ADAPTERS  
(DIFFERENTIAL CONFIGURATION ONLY)

NOTES:

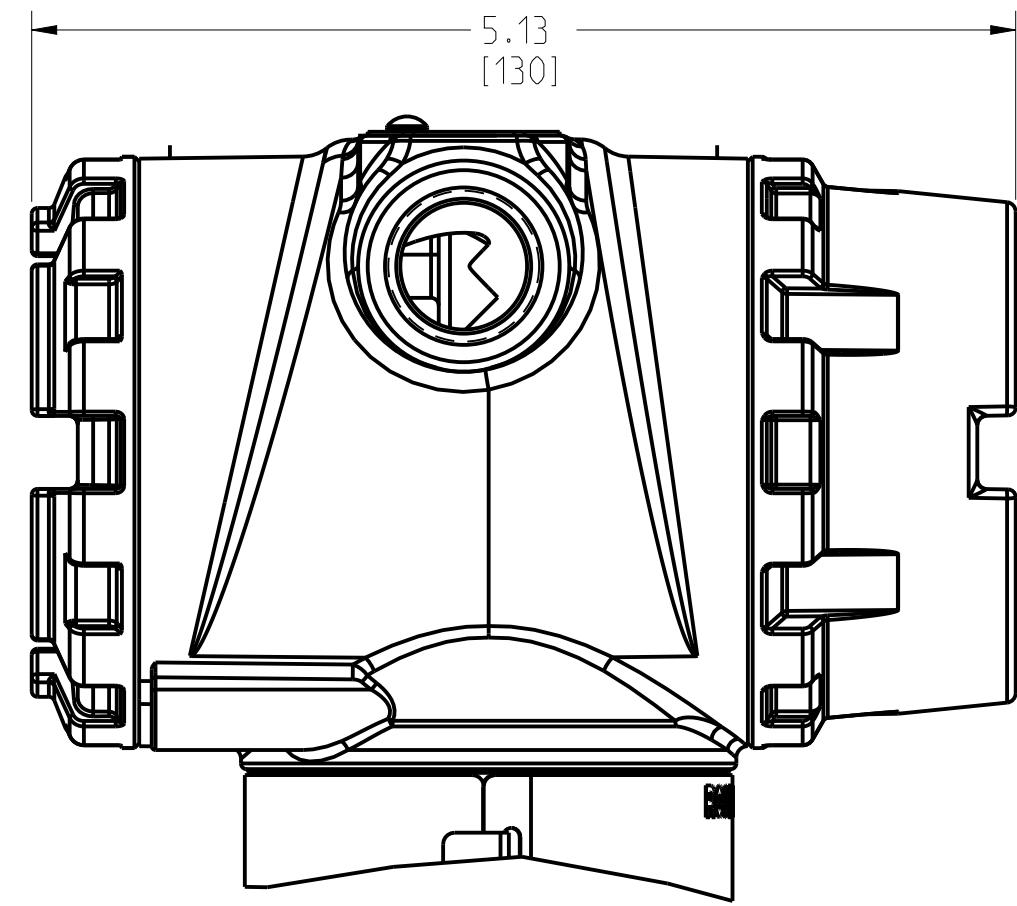
- ROSEMOUNT INC. CERTIFIES THIS DRAWING IN ACCORDANCE WITH ROSEMOUNT ENGINEERING SPECIFICATIONS AND ACCURATELY REPRESENTS THE EQUIPMENT FURNISHED.
- .75 (19) IS REQUIRED TO REMOVE COVERS (EACH SIDE)

UNLESS OTHERWISE SPECIFIED CONNECTIONS AND DIMENSIONS ARE IN ACCORDANCE WITH THE LATEST EDITION OF THE ASME B31.3 CODE AND MUST BE HANDLED ACCORDINGLY. EMERSON	CUSTOMER	3RD ANGLE	SIZE	SCALE	REV
	CUSTOMER DWG NO.		D	1/2	AC
	P.O. No.				
	S.O. No.	TITLE 3051L LIQUID LEVEL PRESSURE TRANSMITTER			
PROJECT NAME	DR. JLA 2/22/13	DRAWING NO.	03031-1030		
APP'D FL 2/25/13			03031-1030		
DO NOT SCALE PRINT CAD MAINTAINED. (PRO/E) PRODUCT CODE		DOC TYPE D		SHEET 1 OF 4	

TAG NO. 03031-1030  
DRAWING NO.

ROSEMOUNT 3051L REV 5 LIQUID LEVEL PRESSURE TRANSMITTER  
COPLANAR FLANGE PROCESS CONNECTION

SHOWN WITH OPTIONAL DIGITAL DISPLAY



OUTPUT CODE (A) AND (M)  
ALUMINUM/SST HOUSING

CONDUIT CONNECTION  
(2 PLACES)

FIELD TERMINALS  
(THIS SIDE)

TRANSMITTER  
ELECTRONICS  
(THIS SIDE)

ROSEMOUNT

IN EXPLOSIVE ATMOSPHERE  
-WARNING-  
ROSEMOUNT  
KEEP TIGHT WHEN CIRCUIT ALIVE

FLANGE  
ADAPTER  
(OPTIONAL)

MOUNTING FLANGE

1/4-18 NPT PROCESS CONNECTION OR  
1/2-18 NPT PROCESS CONNECTION w/ OPTIONAL FLANGE ADAPTERS  
(DIFFERENTIAL CONFIGURATION ONLY)

2.4, or 6" EXTENSION  
(ONLY AVAILABLE WITH 3 AND 4", DN80, DN100 FLANGE  
CONFIGURATIONS)

SEE TABLES ON PAGE 3 FOR DIMENSIONS

<small>UNLESS OTHERWISE SPECIFIED CONSTRUCTION AND FINISHES SHALL CONFORM TO THE PRESENT DRAWING. INFORMATION IS CONTAINED HEREIN AND MUST BE HANDLED ACCORDING TO EMERSON  INFORMATION WITHIN THIS DRAWING IS NOT INTENDED FOR ENGINEERING USE. REFERENCE TO THIS DRAWING SHALL BE MADE FOR ENGINEERING INFORMATION.</small>	CUSTOMER	3RD ANGLE	SIZE	SCALE	REV
	CUSTOMER DWG NO.		D	1/2	AC
	P.O. No.	<b>ROSEMOUNT®</b>	TITLE		
	S.O. No.	3051L LIQUID LEVEL PRESSURE TRANSMITTER			
PROJECT NAME	DR. JLA 2/22/13	DRAWING NO.	03031-1030		
APP'D FL 2/25/13	DO NOT SCALE PRINT		CAD MAINTAINED. (PRO/E)	PRODUCT CODE	DOC TYPE D SHEET 2 OF 4

TAG NO. 03031-1030  
 DRAWING NO.



1 2 3 4 5 6 7 8 9 10 11 12 13 14 15 16

A  
B  
C  
D  
E  
F  
G  
H  
J  
K  
L  
M

A  
B  
C  
D  
E  
F  
G  
H  
J  
K  
L  
M

TABLE 1

CLASS	PIPE SIZE	FLANGE THICKNESS	BOLT CIRCLE DIAMETER B	BOLT CIRCLE DIAMETER C	OUTSIDE DIAMETER C	NO. OF BOLTS	BOLT HOLE DIAMETER	EXTENSION DIAMETER D	O.D. GASKET SURFACE E
ASME B16.5 (ANSI) 150	2 (51)	0.69 (18)	4.75 (121)	6.0 (152)	6.0 (152)	4	0.75 (19)	NA	3.6 (92)
	3 (76)	0.88 (22)	6.0 (152)	7.5 (191)	7.5 (191)	4	0.75 (19)	2.58 (66)	5.0 (127)
	4 (102)	0.88 (22)	7.5 (191)	9.0 (229)	9.0 (229)	8	0.75 (19)	3.5 (89)	6.2 (158)
ASME B16.5 (ANSI) 300	2 (51)	0.82 (21)	5.0 (127)	6.5 (165)	6.5 (165)	8	0.75 (19)	NA	3.6 (92)
	3 (76)	1.06 (27)	6.62 (168)	8.25 (210)	8.25 (210)	8	0.88 (22)	2.58 (66)	5.0 (127)
	4 (102)	1.19 (30)	7.88 (200)	10.0 (254)	10.0 (254)	8	0.88 (22)	3.5 (89)	6.2 (158)
ASME B16.5 (ANSI) 600	2 (51)	1.00 (25)	5.0 (127)	6.5 (165)	6.5 (165)	8	0.75 (19)	NA	3.6 (92)
	3 (76)	1.25 (32)	6.62 (168)	8.25 (210)	8.25 (210)	8	0.88 (22)	2.58 (66)	5.0 (127)
DIN 2501 PN 10-40	DN 50	20 mm	125 mm	165 mm	165 mm	4	18 mm	NA	4.0 (102)
DIN 2501 PN 25/40	DN 80	24 mm	160 mm	200 mm	200 mm	8	18 mm	66 mm	5.4 (138)
	DN 100	24 mm	190 mm	235 mm	235 mm	8	22 mm	89 mm	6.2 (158)
DIN 2501 PN 10/16	DN 100	20 mm	180 mm	220 mm	220 mm	8	18 mm	89 mm	6.2 (158)

TABLE 2

CLASS (1)	PIPE SIZE	PROCESS SIDE F	LOWER HOUSING G 1/4 in. NPT	LOWER HOUSING G 1/2 in. NPT	H
ASME B16.5 (ANSI) 150	2 (51)	2.12 (54)	0.97 (25)	1.31 (33)	5.65 (143)
	3 (76)	3.6 (91)	0.97 (25)	1.31 (33)	5.65 (143)
	4 (102)	3.6 (91)	0.97 (25)	1.31 (33)	5.65 (143)
ASME B16.5 (ANSI) 300	2 (51)	2.12 (54)	0.97 (25)	1.31 (33)	5.65 (143)
	3 (76)	3.6 (91)	0.97 (25)	1.31 (33)	5.65 (143)
	4 (102)	3.6 (91)	0.97 (25)	1.31 (33)	5.65 (143)
ASME B16.5 (ANSI) 600	2 (51)	2.12 (54)	0.97 (25)	1.31 (33)	7.65 (194)
	3 (76)	3.6 (91)	0.97 (25)	1.31 (33)	7.65 (194)
DIN 2501 PN 10-40	DN 50	2.4 (61)	0.97 (25)	1.31 (33)	5.65 (143)
DIN 2501 PN 25-40	DN 80	3.6 (91)	0.97 (25)	1.31 (33)	5.65 (143)
	DN 100	3.6 (91)	0.97 (25)	1.31 (33)	5.65 (143)
DIN 2501 PN 10/16	DN 100	3.6 (91)	0.97 (25)	1.31 (33)	5.65 (143)

DRAWING NO. 03031-1030 TAG NO. CAL.

UNLESS OTHERWISE SPECIFIED CONVERSIONS AND DIMENSIONS INFORMATION IS CONTAINED HEREIN AND MUST BE HANDLED ACCORDING EMERSON INFORMATION WITHIN THIS DOCUMENT IS NOT INTENDED FOR ENGINEERING USE. REFERENCE SHOULD BE MADE TO THE APPROPRIATE EMERSON DOCUMENT FOR ENGINEERING INFORMATION.	CUSTOMER	3RD ANGLE	SIZE	SCALE	REV
	CUSTOMER DWG NO.	<b>ROSEMOUNT®</b>			
	P.O. No.	TITLE 3051L LIQUID LEVEL PRESSURE TRANSMITTER			
	S.O. No.	PROJECT NAME DR. JLA 2/22/13 DRAWING NO. APP'D FL 2/25/13 03031-1030			
DO NOT SCALE PRINT CAD MAINTAINED. (PRO/E) PRODUCT CODE		DOC TYPE D		SHEET 4 OF 4	